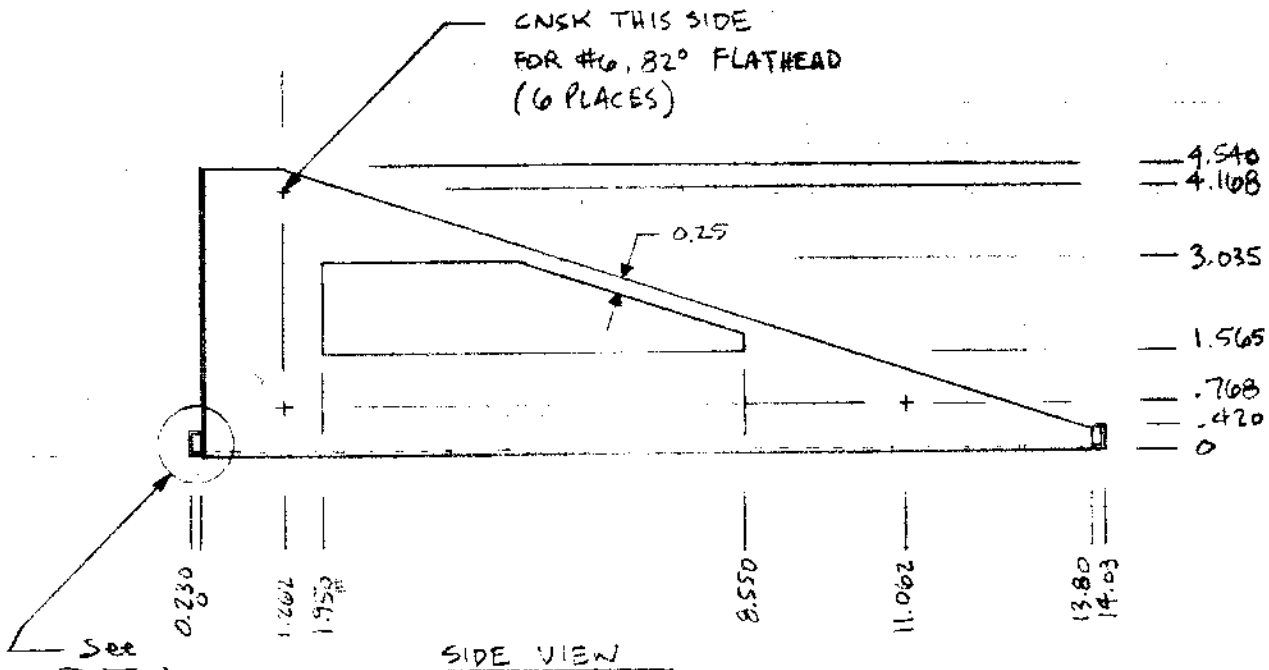


TYPICAL

- NOTES:
- 1) MATERIAL: 0.002 COLD ROLLED STEEL
  - 2) Tol  $\pm 0.010$ "
  - 3) ALL DIMENSIONS IN INCHES
  - 4) PAINT WARM GREY, CARDINAL # 8101 MEDIUM TEXTURE ON ALL SURFACE
  - 5) ALL BENDS TO BE MINIMUM RADIUS.



STANFORD  
RESEARCH  
SYSTEMS

DRAWN G-18-86

ISSUED AWR

DUAL RACK MOUNT

SIZE	FSCM NO.	DWG. NO.	REV
		7-00113-720	5
SCALE 3:1	DG535-37	SHEET	

REVISIONS				
ZONE	REV.	DESCRIPTION	DATE	APPROVED
	B	CUT CLEARANCE ( $1/16"$ ) ON FRONT + REAR HEM	7-3-86	AWR

ADDED OVERALL HEIGHT DIM. 7-17-86 SRL

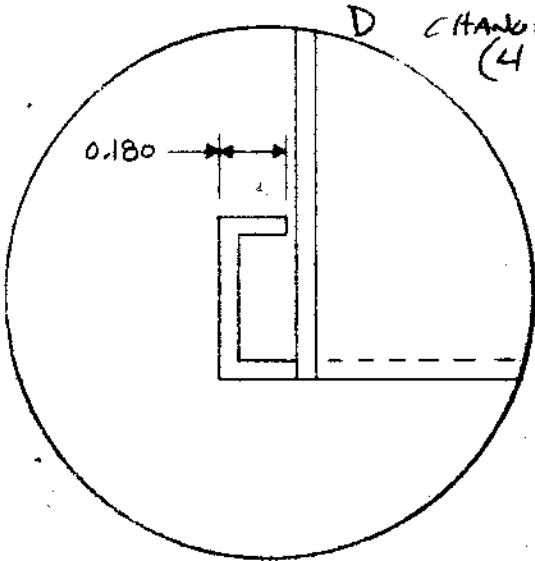
C CHANGED OVERALL WIDTH TO 19.000"  
SUBTRACTED .06" FROM ALL OTHER WIDTH DIMENSIONALS

CHANGED .200 TO .230

CHANGED 14.00 TO 14.03 10/30/86 SRL

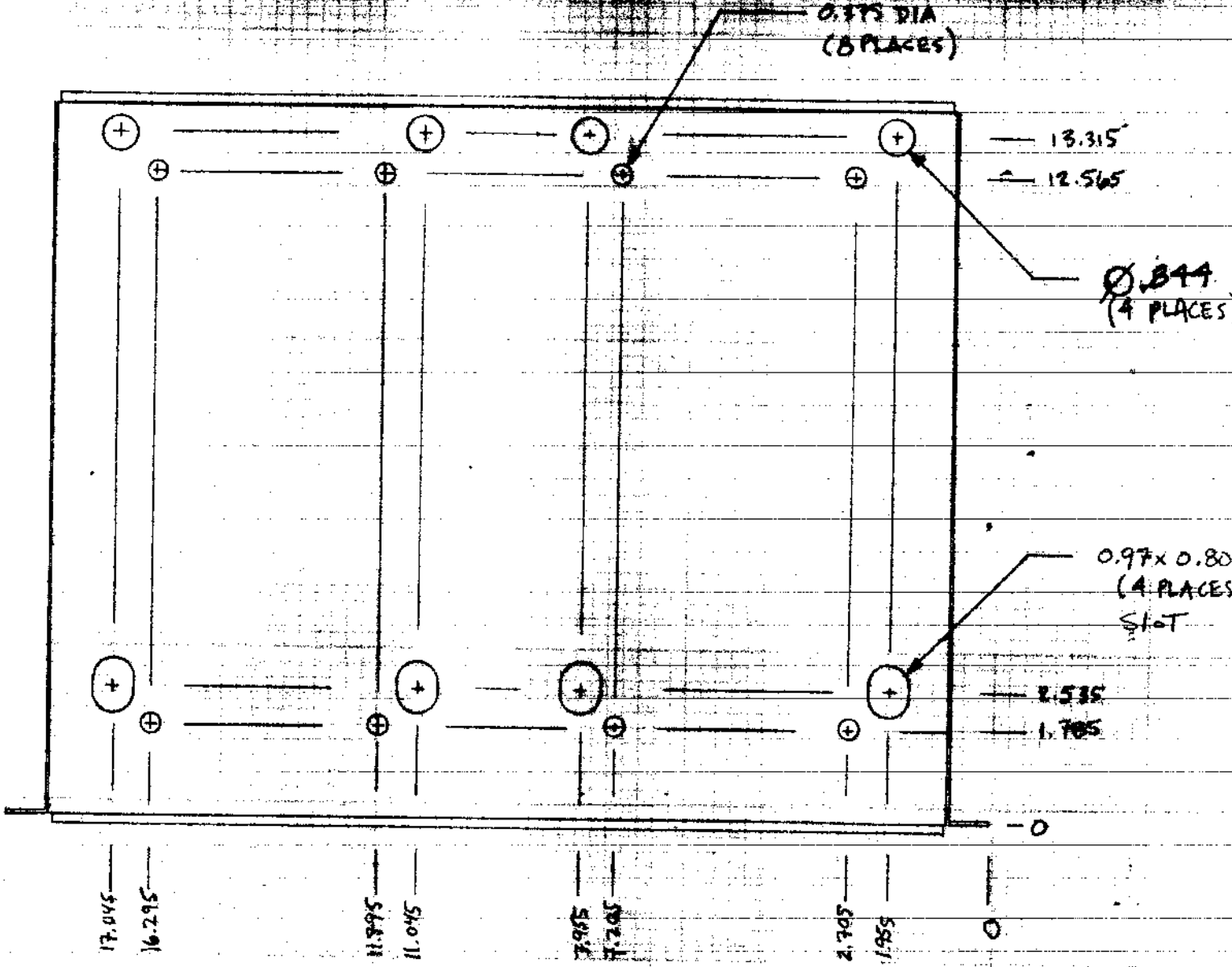
D CHANGED  $\phi .72$  TO  $.844$  (4 PL) 10/23/89 J.G./M.R.

E CHANGED PAINT COLOR 9/13/90 J.G.

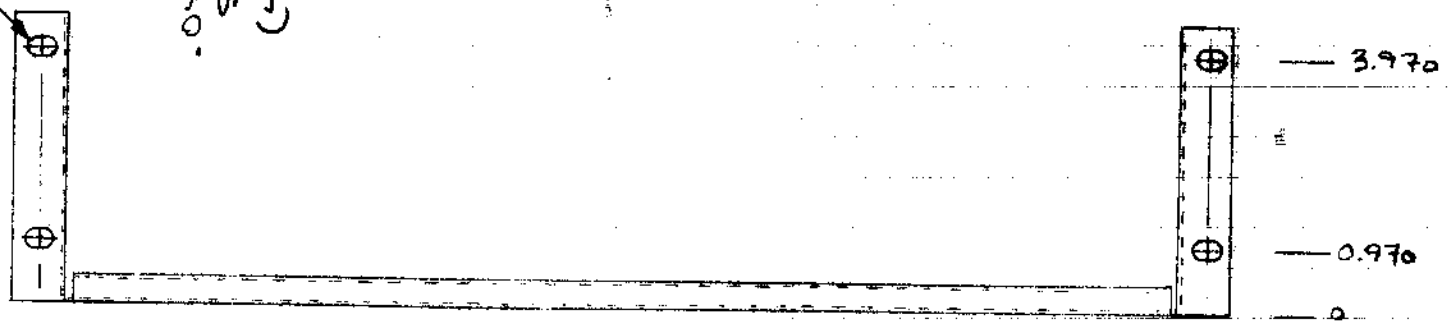


DETAIL 1:2 SCALE  
TYPICAL

- NOTES:
- 1) MATERIAL: 0002 COLD ROLLED STEEL
  - 2) Tol  $\pm 0.010"$
  - 3) ALL DIMENSIONS IN INCHES
  - 4) PAINT WARM GREY, CARDINAL # 8101-50714 MEDIUM TEXTURE ON ALL SURFACES.
  - 5) ALL BENDS TO BE MINIMUM RADIUS.



0.43 x 0.25 Slot (4 Places)



19.000

18.675

18.210

18.147

0.852

0.790

0.325

SEE DETAIL